

ReliSorb™ OD

Highly Porous Hydrophilic Packing Material



Product Features

| | |
|---------------------------------|-----------------------------------|
| Matrix | Highly porous polymethacrylate |
| Appearance | White opaque spherical beads |
| Functional group | Octadecyl |
| Dynamic Binding Capacity (DBC) | min. 20 mg/ml (BSA ^a) |
| pH stability range | 1 – 14 |
| Temperature stability range | 2 – 60 °C |
| Recommended storage temperature | 2 – 30 °C |

^a Feed solution: 10 g/l BSA in 20 mM phosphate buffer, pH 7 + (NH₄)₂SO₄ 2 M; flow rate = 150 cm/h

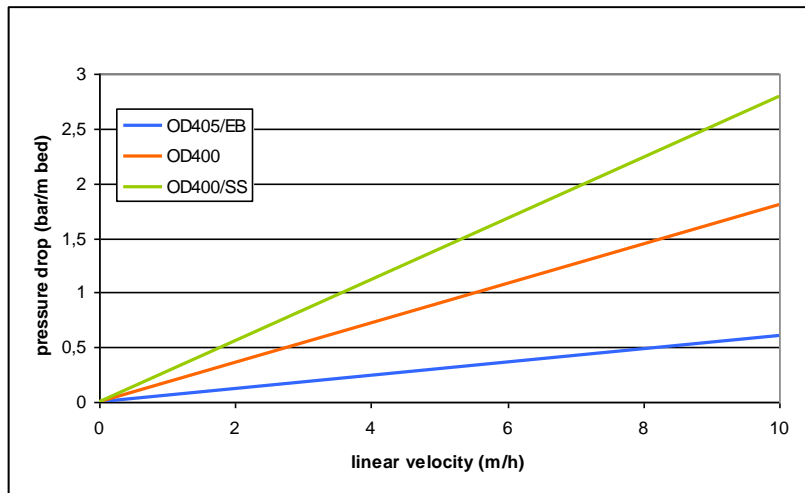
Application

Hydrophobic interaction chromatography for the purification of biomolecules (proteins, antibodies, etc.)

| <i>Name</i> | <i>Particle Size Range (µm)</i> | <i>Mean diameter (µm)</i> |
|-------------------------------|-------------------------------------|-------------------------------|
| ReliSorb™ OD400/SS (*) | 50 – 150 | 90 |
| ReliSorb™ OD400 | 75 – 200 | 120 |
| ReliSorb™ OD405/EB | 200 – 500 | 300 |

(*) also available in 0.8 x 10 cm **ReliChrom™** prepacked columns with 5 ml net volume; see the separate documentation.

Pressure drop in water at 25°C



Example of purification of Lipozyme (Novozyme)

Column dimensions:

16 mm i.d., 16 ml bed volume

Sample loading:

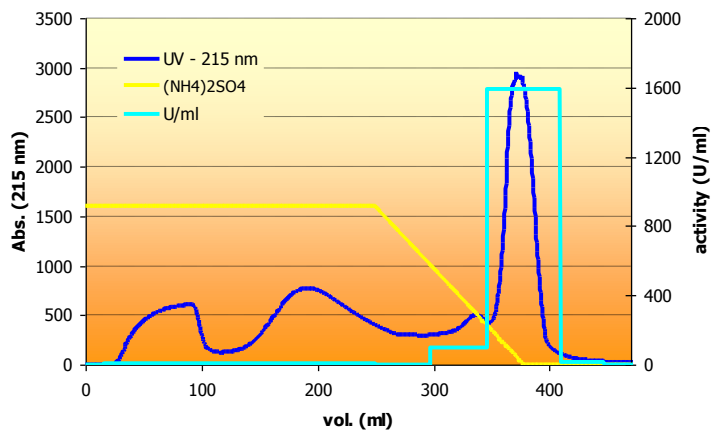
solid sample dissolved in
20 mM phosphate buffer
pH 7.0 + 2 M (NH₄)₂SO₄

Buffer elution:

linear gradient

Flow rate: 60 cm/h (2 ml/min)

Temperature: 25 °C



Blue line: elution profile; **Yellow line:** buffer elution gradient;
Green line: enzyme activity measurement using *p*-nitrophenyl butyrate as substrate

Remarks

Wear safety glasses and gloves during the resin handling.
Refer to the Safety Data Sheet for all details.

Notice:

All the data and suggestions made herein are based upon our research and are believed to be accurate. However, no guarantee is made or implied since conditions and methods of use of our products are beyond our control. Our products are sold on the conditions that the user will evaluate himself, as well as our formulas and recommendations, to determine their suitability for his own purpose. Also, statements as to the use of our products are not be construed as recommendations for their use in the infringements of any patent.